

SCL2000 LAMINATION WALL PANEL SYSTEM

INTRODUCTION:

SCL2000 Lamination Wall Panel System is design to meet your most demanding criteria as:

1. Cost effective & value engineering
 - With a special design aluminium profile and C-Steel channel, systems are easy to install and joint.
 - Flexible installation, can install the C-Steel channel without install aluminium honeycomb panel, or both process done in same time, easy for installation schedule planning.
 - Lower cost design
 - High intensity aluminum honeycomb panel, not easy break off after installation.
2. Superior appearance
 - Smooth color bone steel skin gives a perfect appearance
3. Demountable and easy to remodel
 - Using special design profile to install, all using self-taped screw to install with each other, easy to demountable and remodel
 - Easy to change the defect panel, panel-changing can done with only remove the batten between panels.
 - Panel can uninstall and remodel at other location, also easy to cut on site to fix the systems.
 - High intensity aluminum honeycomb panel, easy for handling during remodel process.
4. Fast delivery and competitive cost
 - Provide the fast delivery to meet customer schedule.
 - Provide high quality product and reasonable price to meet customer requirement.
5. Suitable for cleanroom 1K to 100K
 - Laminated wall panel systems is special design for low end clean room which suitable from class 1K to class 100K
 - Laminating to the civil structure wall.

System: Demountable wall panel system

Panel Type: 7 mm or 12 mm thick
Panel edge without close edge
Combustion property, non-combustible material according to standard GD5464

Applications: Electronics and Pharmaceutical Cleanroom

Facings: 0.5mm Steel skin with PE Roll Coated, Static Dissipative Surface Treatment
Non-Conductivity
The surfaces are covered with a plastic foil (0.05 mm) for the prevention of scratches during transport and installation damages.

Color: Grey White (Close to RAL 9016)

The vertical joint between panels will be sealed with aluminium special design accessories, wall cladding using special design C-Steel channel (Refer to detail drawing).

Figure 1: SCL2000 System Detail Drawing

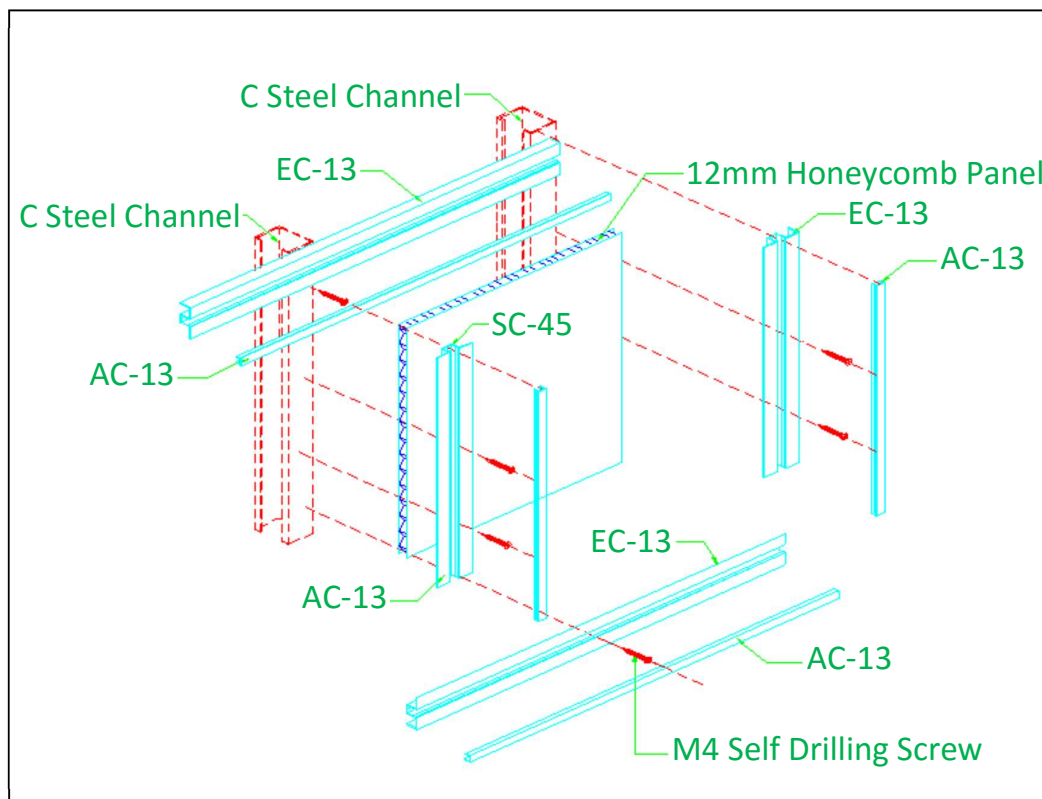


Figure 2: SCL2000 System Disassemble Drawing



Figure 3: SCL2000 System Panel Intermediate Batten and Capping Joint

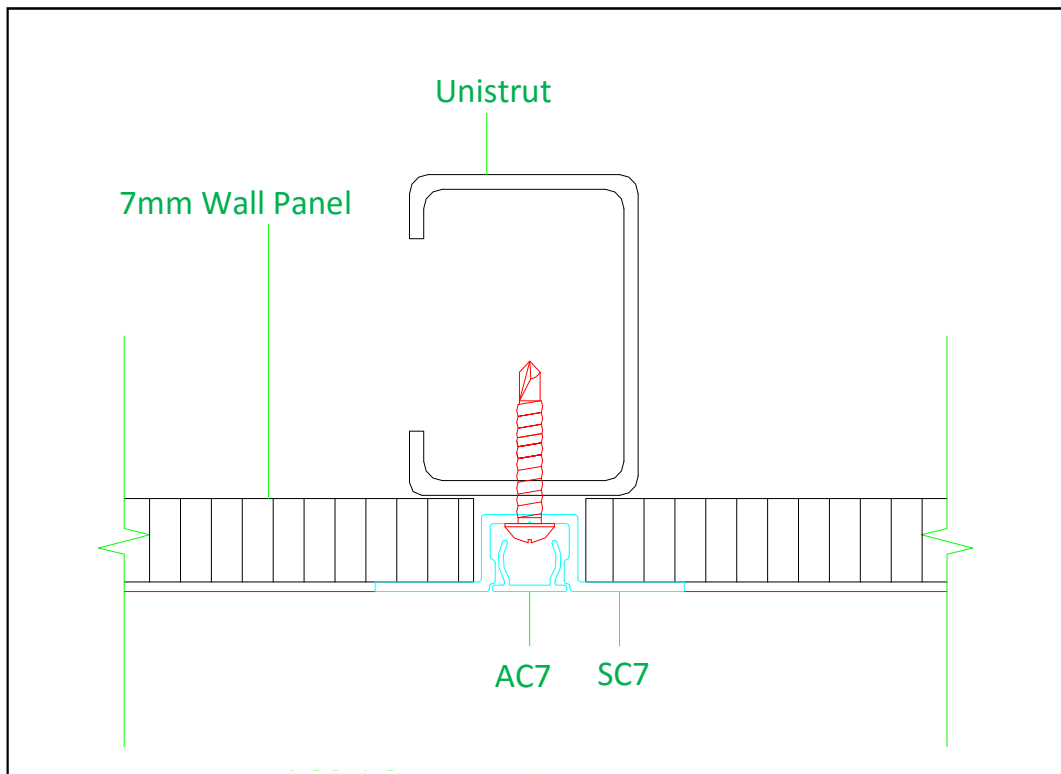


Figure 4: SCL2000 System Window & Panel Joint

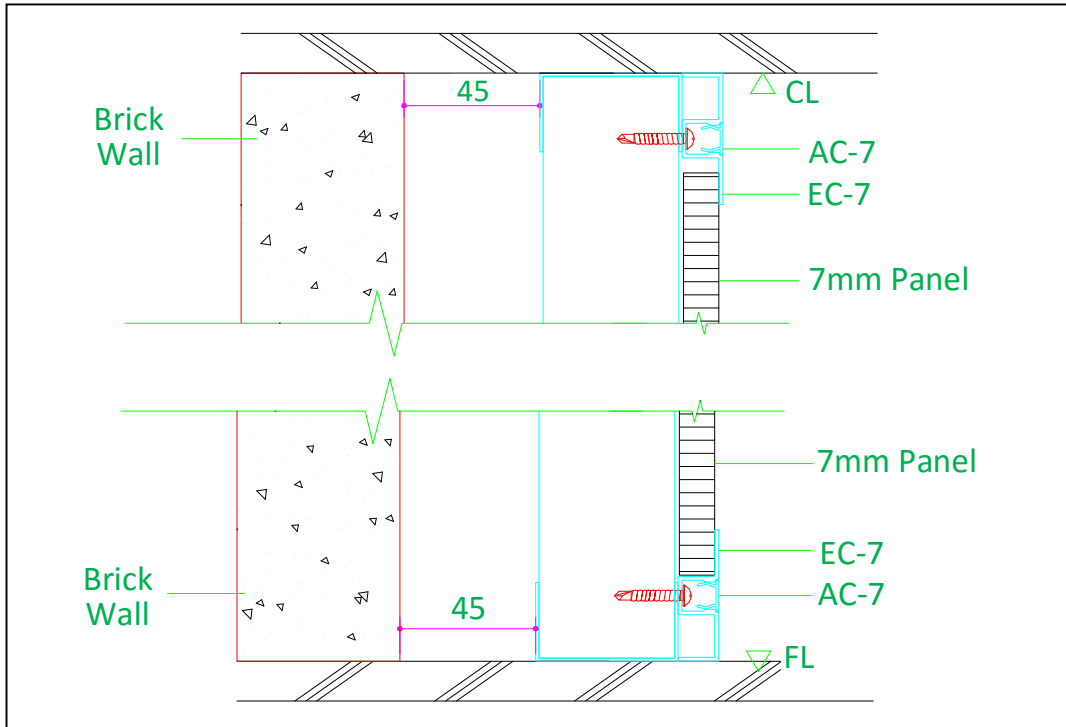


Figure 5: SCL2000 System Corner and End Post Joint

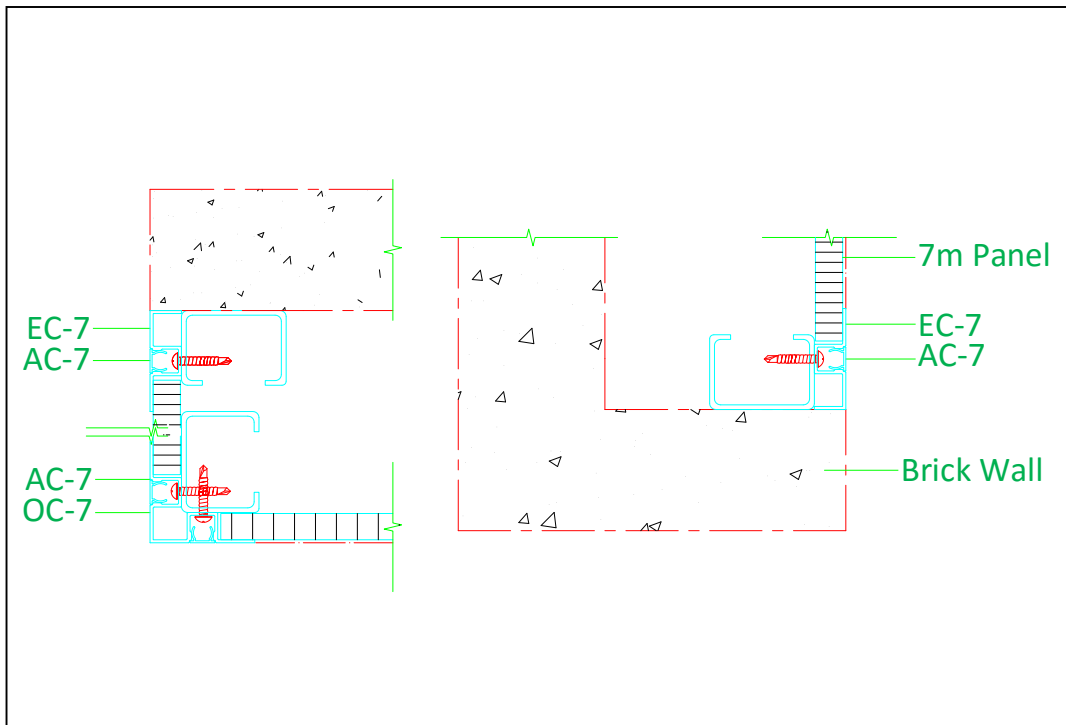


Figure 6: SCL2000 Finish Assemble Simulation Outlook Drawing

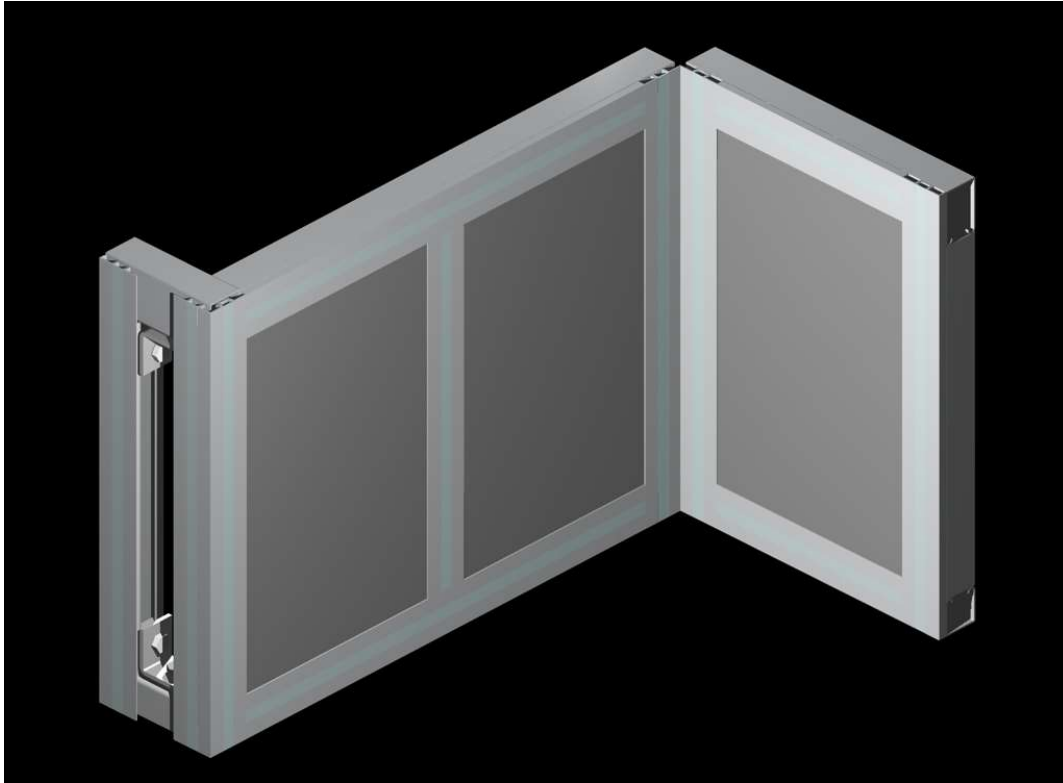


Figure 7: SCL2000 System Finish Assemble Simulation Drawing (Behind Wall)

