

SFS3000 STUD WALL PANEL SYSTEM

INTRODUCTION:

SFS3000 Stud System is design to meet your most demanding criteria as:

1. Cost effective & value engineering
 - Flexible, easy and easy installation systems which can be pre-installed the aluminium stud frame without the installing the panel, fast installation and suitable for light completion schedule.
 - Optimum cost control design
 - The flexibility designed into the basic column-locking bar type function permits tailor-made solutions to suit the most varied technical requirements.
2. Superior appearance
 - Smooth color roll coated aluminium skin surface gives perfect appearance
3. Demountable and easy to remodel
 - Columns and locking bars can both be moved horizontally and vertically.
 - Wall height can be easily changed and doors of any type and size easily inserted wherever needed.
 - Single-side wall sections can be converted into double-side without problem. Panels and glazing can be replaced at any time.
 - Panel can be uninstalled and relocated, also easy to modify on site.
 - High intensity aluminium honeycomb panel, easy for handling during remodel process.
 - Reusable system with flexible custom to size
4. Fast delivery and competitive cost
 - SYC provide the fast delivery to meet customer schedule
 - SYS provide high quality product and reasonable price to meet customer requirement.
5. Suitable for cleanroom up to Class 1
 - SFL3000 stud wall panel systems are special design for high end cleanroom up to Class 1

- System:** Demountable wall panel system
- Panel Type:** 45 mm thick
Panel surrounding is without close edge optional with T=0.6mm GI coated steel close edge
Combustion property, non-combustible material, according to standard GB5464
- Applications:** Electronics & Pharmaceutical Cleanroom
- Facings:** 0.8mm PE Roll Coated steel skin, with or without Static Dissipative Surface Treatment
Conductivity: $R=10^6\Omega-10^9\Omega$
The surfaces are protected with a film foil (0.04mm) for the prevention of scratches during transport and installation damages.
- Color:** Grey White (Close to RAL 9016)
- Core:** Aluminium Honeycomb, T=0.06 mm, $\varnothing=17$ mm
- Adhesive:** Rebon YB2002 (resin) mixed with YB8001 (Hardener) Epoxy Paste Adhesive
Mixing Ratio, YB2002:YB8001=2:1
- Panel Dimension:** Thickness of the panel is 45 mm.

Table 1: Honeycomb Aluminum Panel Specification

Description	Honeycomb Aluminium Panel
Non-Combustible	Class B1
Thermal Conductivity	<0.044 W/mk
Resists Temperatures	>100°C
Water Absorption	Moderate
Compression Resistance	>100kPa
Aluminum Core Thickness	0.06mm
Aluminum Honeycomb Diameter	D=17mm
Compressive Strength	>200 kPa
Flammable Gas Toxicity	Less

The vertical joint between panels will be sealed with SYC aluminium special design accessories (Refer to detail drawing).

Figure 1: System Detail Drawing

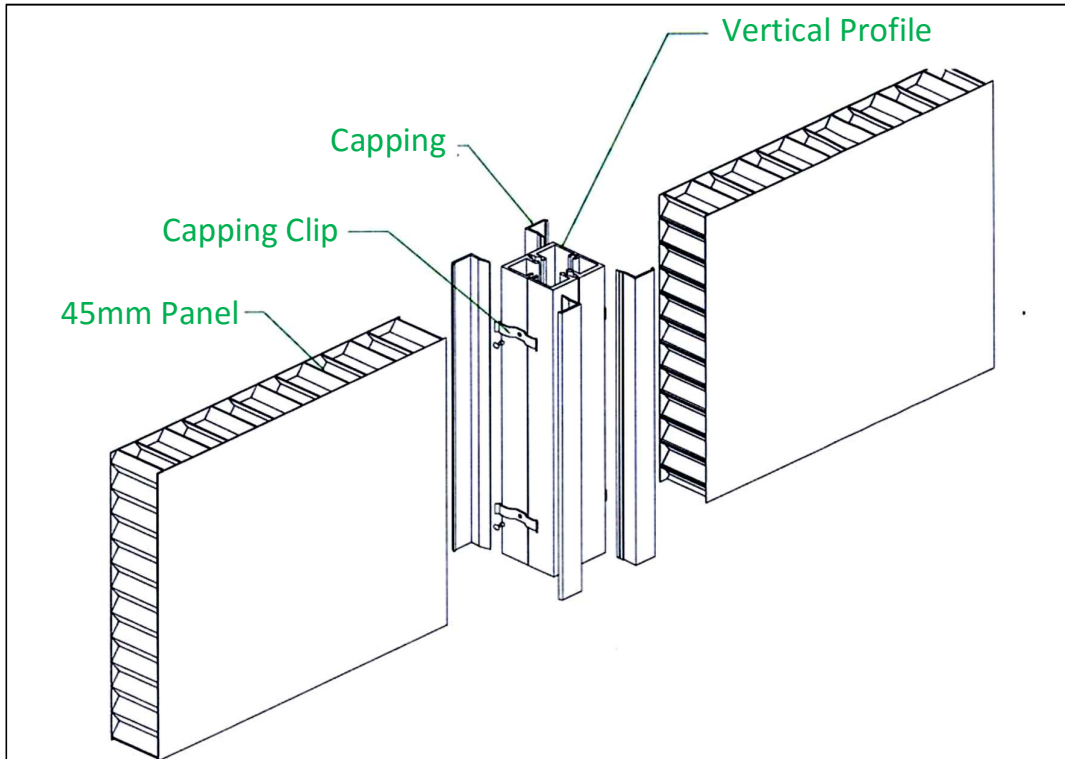


Figure 2: System Drawing (Internal)

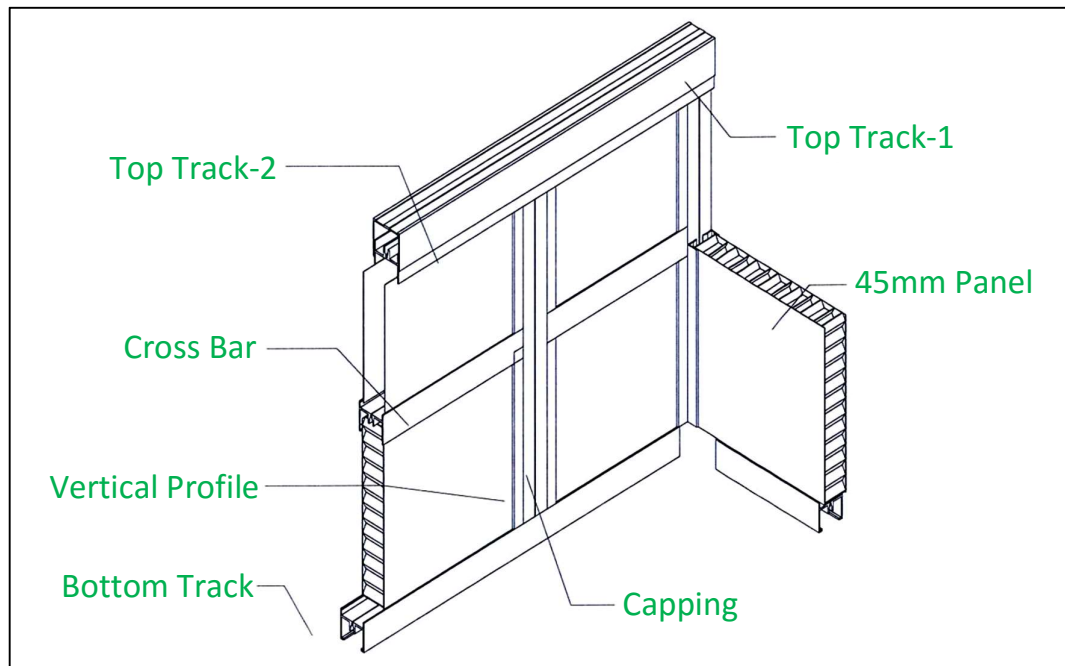


Figure 3: System Drawing (External)

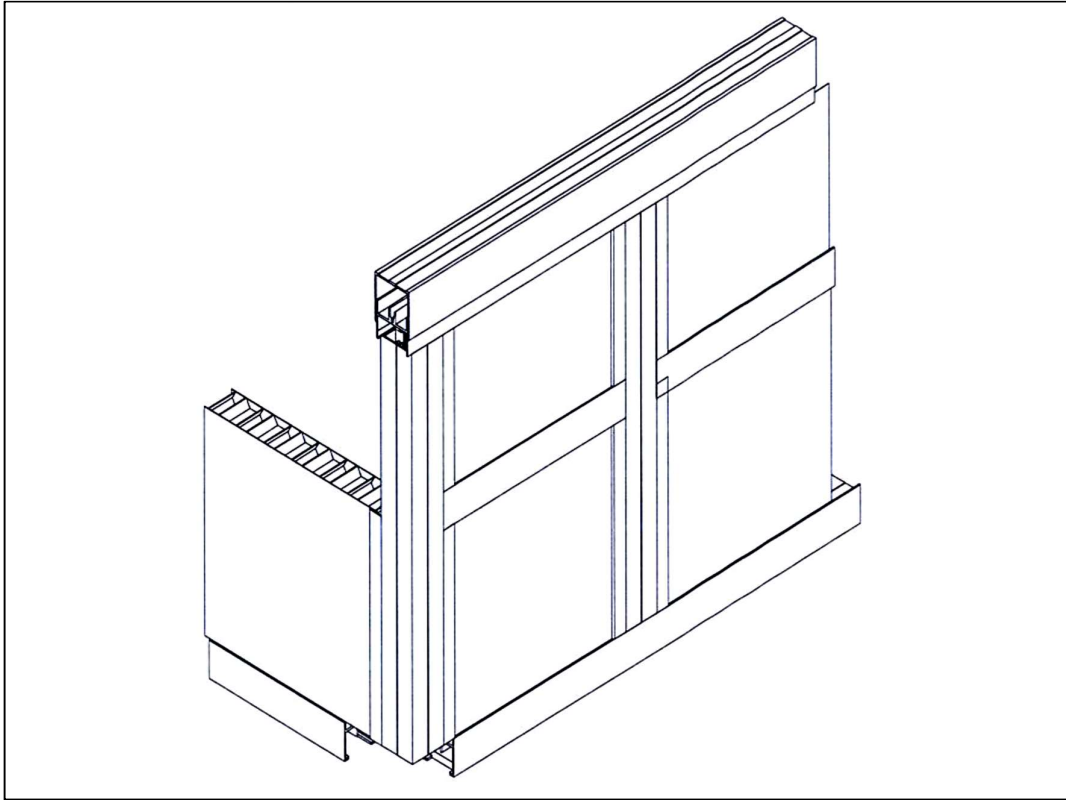


Figure 4: System Drawing (External)

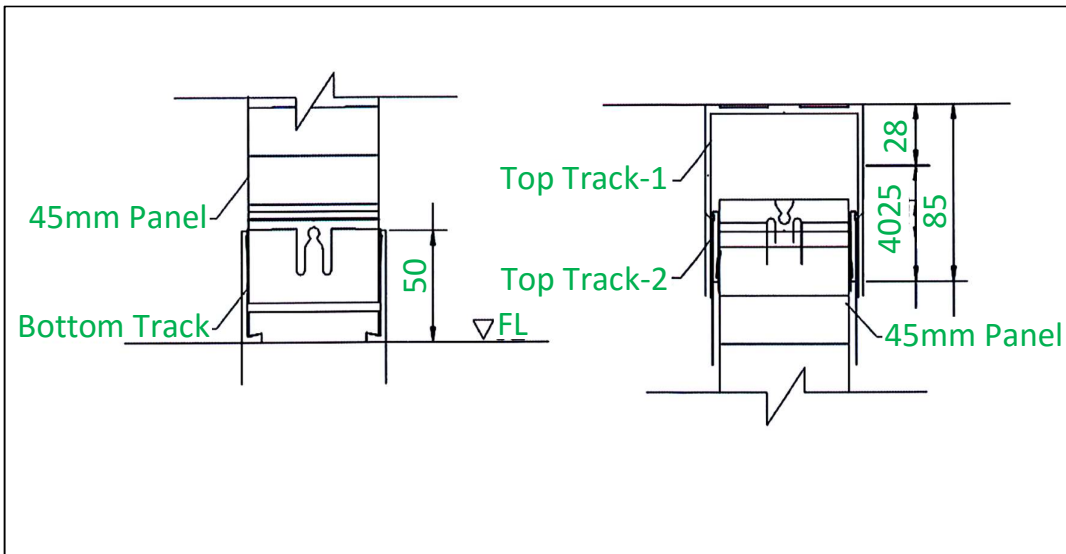


Figure 5: SFS3000 System Panel Top and Bottom Track Joint

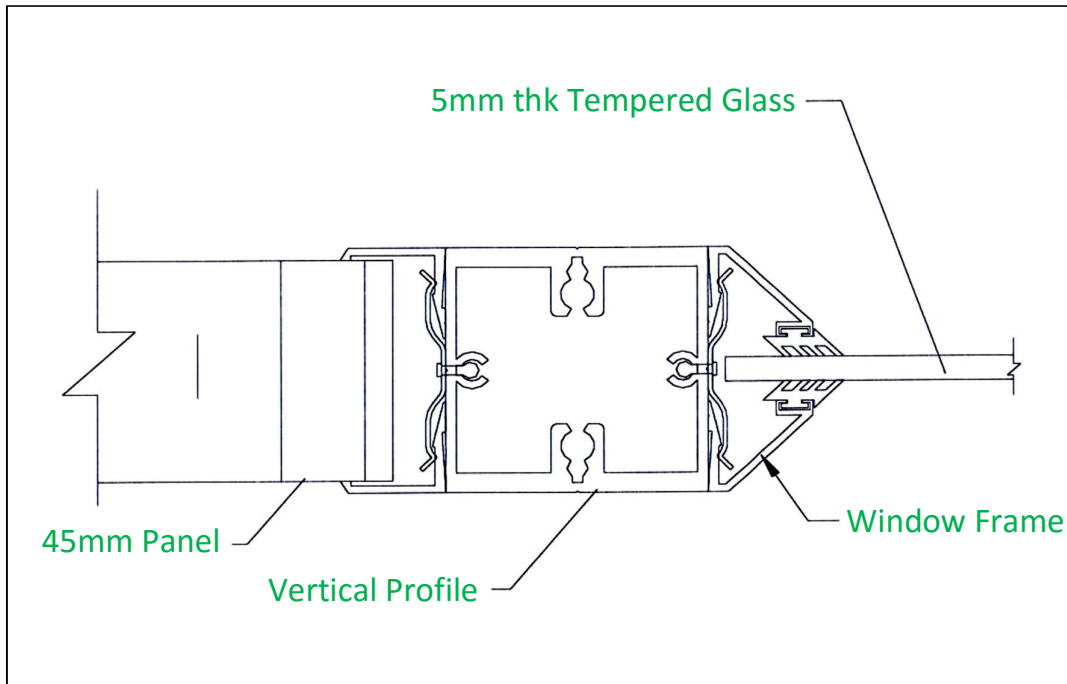


Figure 6: SFS3000 System Window & Panel Joint

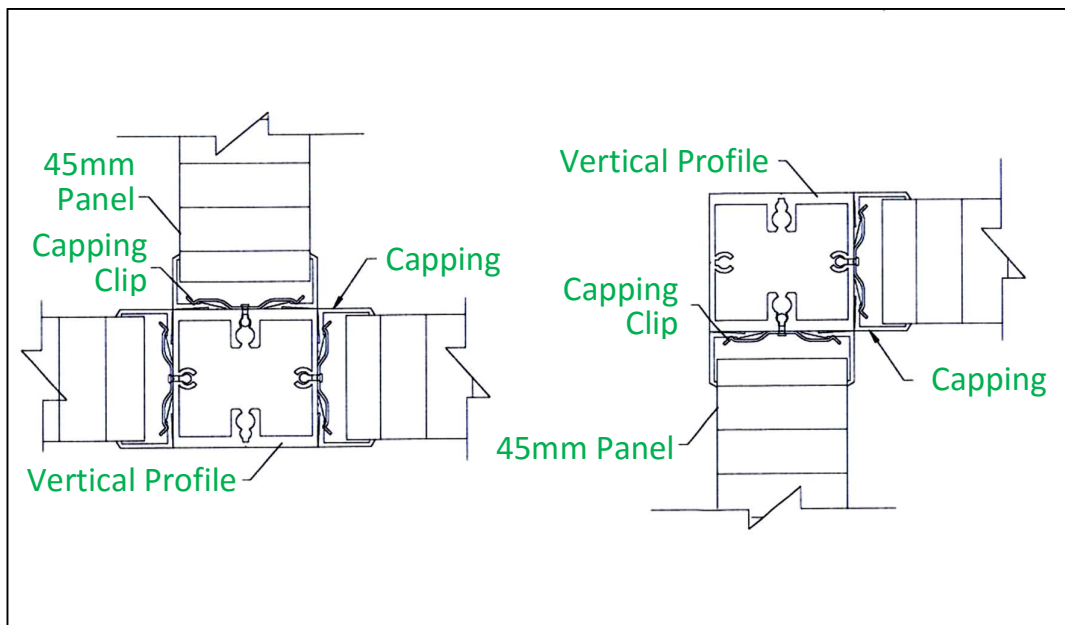


Figure 7: SFS3000 System Corner and End Post Joint

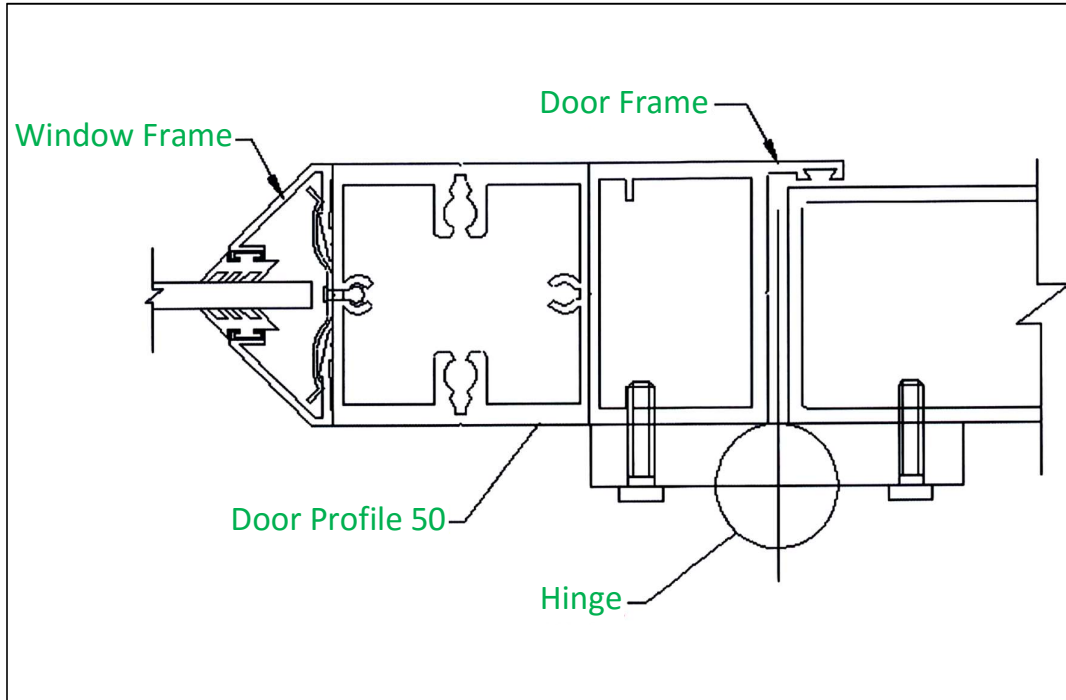


Figure 8: SFS3000 System Appearance



Figure 9: SFS3000 System Appearance

