

## SK2000 HEAVY DUTY WALKABLE CEILING GRID SYSTEM

### INTRODUCTION:

SYC Heavy Duty Walkable Ceiling Grid system provides the most comprehensive variety of heavy duty clean room ceiling solution in the industry.

The system is designed for walkable or to carry loads such as live load, utility racking, FFU and etc.

The system provide faster and easier assembly with solid zinc alloy cross connector with sprinkler head opening and one way locking T-Shape bolt, give installer greater installation accuracy, quickly and efficiently, reducing the construction schedule.

The system is non-progressive and demountable system. Also a reusable system with flexible custom to size.

Loading Performance is maximum uniform load is 200kg/sq.m and point load is 120kg can be applied at any location along the grid.

### SYC Heavy Duty Walkable Ceiling Grid is design to meet your most demanding criteria as:

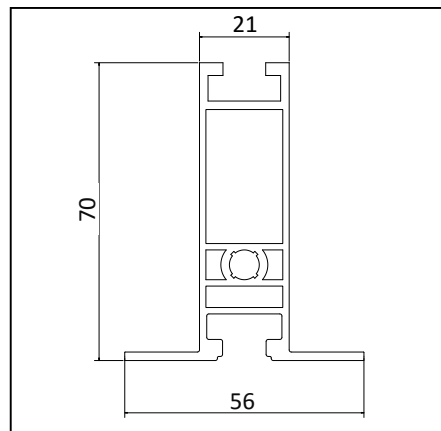
1. Cost effective & value engineering
  - System come with lightweight and solid aluminum profile, combine with other standard accessories, provide strong and lower price ceiling grid structure
  - With SYC friendly user design profile, systems is fast, flexible and easy installation
2. Superior appearance
  - Systems come with aluminium natural anodized surface gives a perfect appearance
3. Fast delivery and competitive cost
  - SYC provides the fast delivery to meet customer schedule.
  - SYS provide high quality product and reasonable price to meet customer requirement
4. Suitable for cleanroom Class 1 to 100K
  - Provide clean environment which suitable for Class 1 to 100K

5. Reusable system with flexible custom to size

- Flexible systems which easy to uninstall and remodel in other location
- Easy to handle

**Ceiling Tee:** Heavy Duty Ceiling Tee  
Height and Width are 70 and 58 mm respectively  
Material is AL Alloy (6065-T5)

**Figure 1: SK2000 Ceiling Grid**



**Panel Type:** 30 mm thick  
Panel edge sealed by 0.5 mm GI sheet made framework

**Applications:** Electronics & Pharmaceutical Cleanroom

**Facings:** 0.5 mm PE Roll Coated steel skin, with or without Static Dissipative Surface Treatment  
Or 0.5 mm PE Roll Coated, non-conductivity surface  
The surfaces are protected with a film foil (0.04mm) for the prevention of scratches during transport and installation damages.

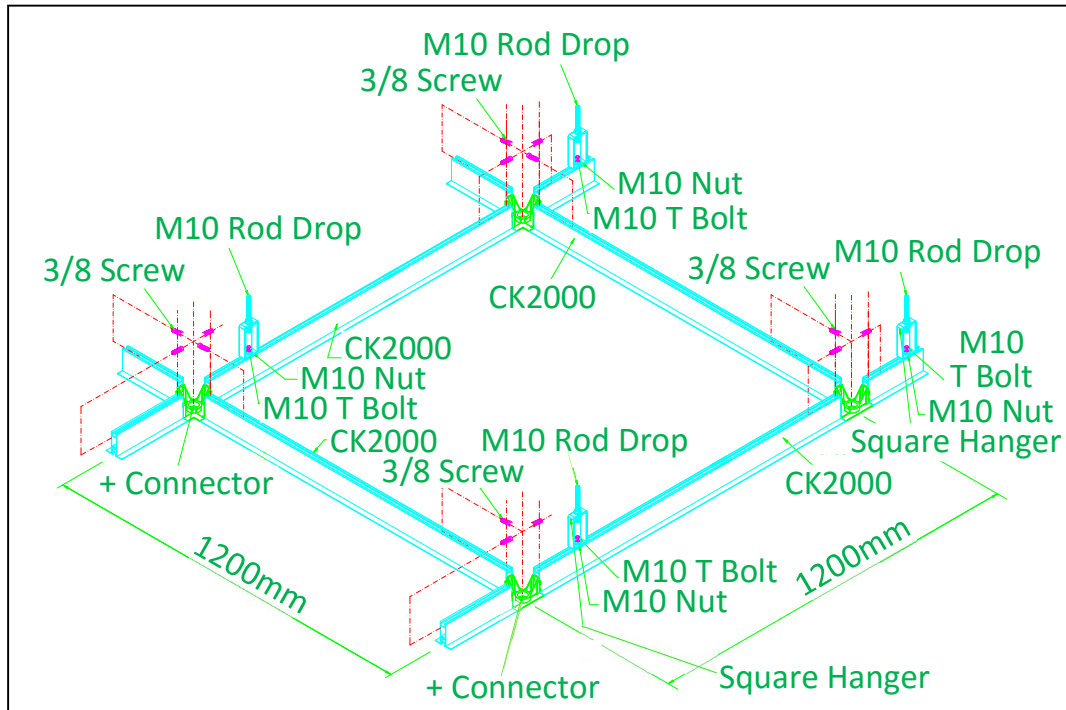
**Color:** Grey White (Close to RAL 9016)

**Core:** Aluminium Honeycomb Core, Cell size=15mm, T=0.06 mm

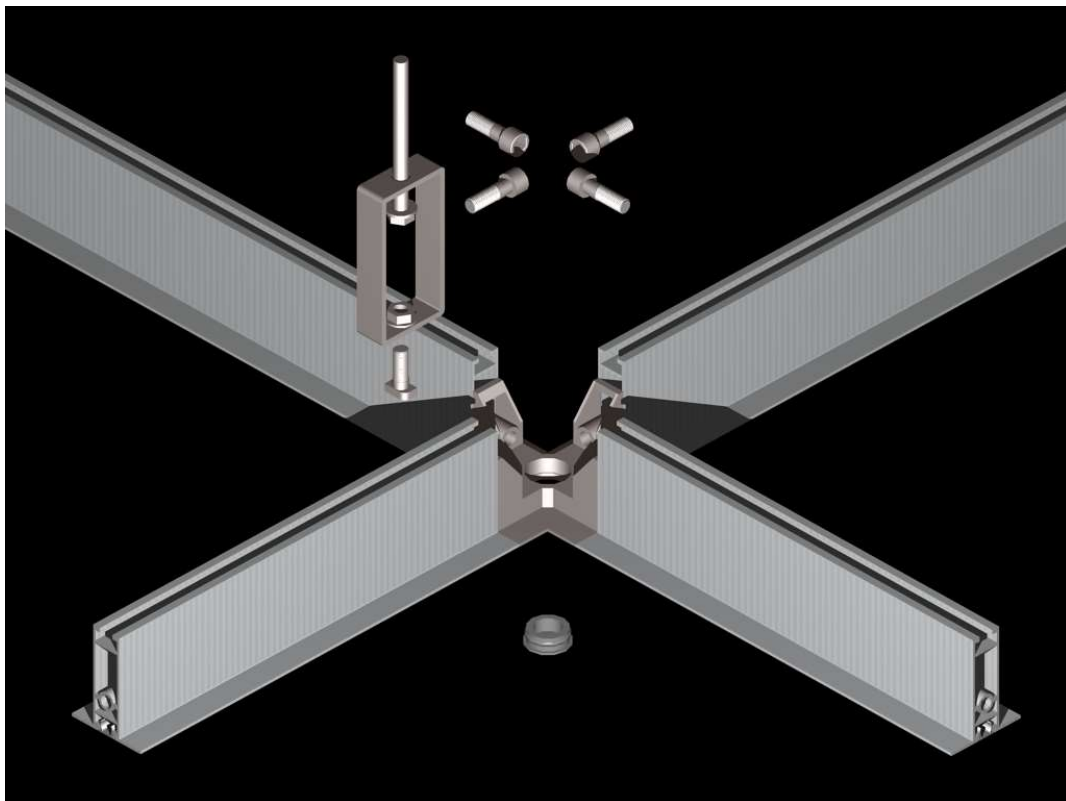
**Adhesive:** Rebon YB2002 (resin) mixed with YB8001 (Hardener) Epoxy Paste Adhesive  
Mixing Ratio, YB2002:YB8001=4:1

**Panel Dimension:** Thickness of the panel is 30 mm.  
Dimension is 600 x 1200 mm or 1200 x 1200 mm

**Figure 2: System Structure**



**Figure 3: SK2000 System Disassemble Drawing**



**Figure 4: SK2000 System Appearance**

