

GMP2000S PHARMACEUTICAL CLEANROOM WALL PANEL SYSTEM

INTRODUCTION:

GMP2000s Pharmaceutical Cleanroom Wall Panel System is design to meet your most demanding criteria as:

1. Cost effective & value engineering
2. Superior appearance
3. Non-demountable
4. Fast, flexible and easy installation
5. Fast delivery and competitive cost
6. Fire rated
7. Suitable for cleanroom 100 to 100K
8. Comply with GMP standard

System: Non-demountable wall panel system

Panel Type: 50mm thick
Panel edge sealed by 0.8mm GI sheet made framework

Applications: Pharmaceutical Cleanroom

Facings: 0.5mm PE Roll Coated steel skin, with or without Static Dissipative Surface Treatment
Conductivity: $R=10^6\Omega-10^9\Omega$
Or 0.5mm PE Roll Coated, non-conductivity surface and also we provide PVDF and HPL optional.
The surfaces are protected with a film foil (0.05mm) for the prevention of scratches during transport and installation damages.

Color: Per Request

Core: Aluminum Honeycomb, Rockwool, Paper Honeycomb

Adhesive: Rebon YB2002 (resin) mixed with YB8001 (Hardener) Epoxy Paste Adhesive
Mixing Ratio, YB2002:YB8001=4:1

Panel Dimension: Thickness of the panel is 50mm.
Width of the panel is 1184mm

Material: Aluminum Alloy (6063-T5)
Surface Treatment, Powder coated with grey white color or natural iodized.

Table 1: Honeycomb Aluminum Panel Specification

Description	Honeycomb Aluminium Panel
Non-Combustible	Class B1
Thermal Conductivity	<0.044 W/mk
Resists Temperatures	>100°C
Water Absorption	Moderate
Compression Resistance	>100kPa
Aluminum Core Thickness	0.06mm
Aluminum Honeycomb Diameter	D=17mm
Compressive Strength	>200 kPa
Flammable Gas Toxicity	Moderate

Table 2: Rockwool Panel Specification

Description	Rockwool Panel
Fire Rating	>1 hour
Thermal Conductivity	<0.044 W/mk
Resists Temperatures	>1000°C
Water Absorption	Moderate
Compression Resistance	>40 Kpa
Noise Absorbing, at 125 Hz	0.07
Density, kg/m ³	100 kg/m ³ ~120 kg/m ³
Compressive Strength	150 kPa
Flammable Gas Toxicity	Moderate
Core Intenerate Temperature	>150°C

The design is based on partition decoration and easy for cleaning which the profile is prevents dust accumulates.

The systems provide faster and easier assemblies and all screw is hidden which the screw is not appear on curving surface, give installer greater installation accuracy, quickly and efficiently, reducing the construction schedule. The system is non-progressive and demountable system. Can easily reusable and relocation.

Figure 1: GMP2000S System Detail Drawing

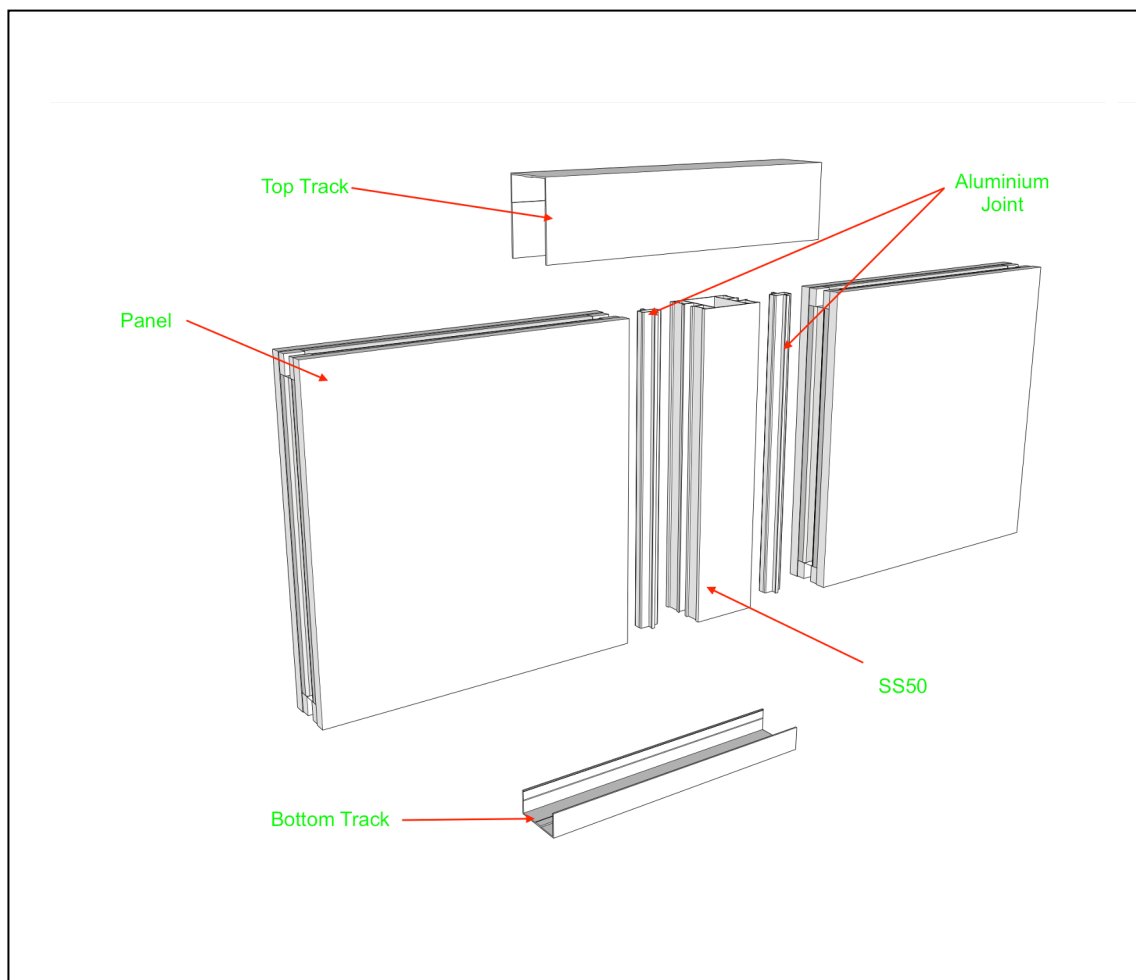


Figure 2: GMP2000S System Panel Intermediate Joint

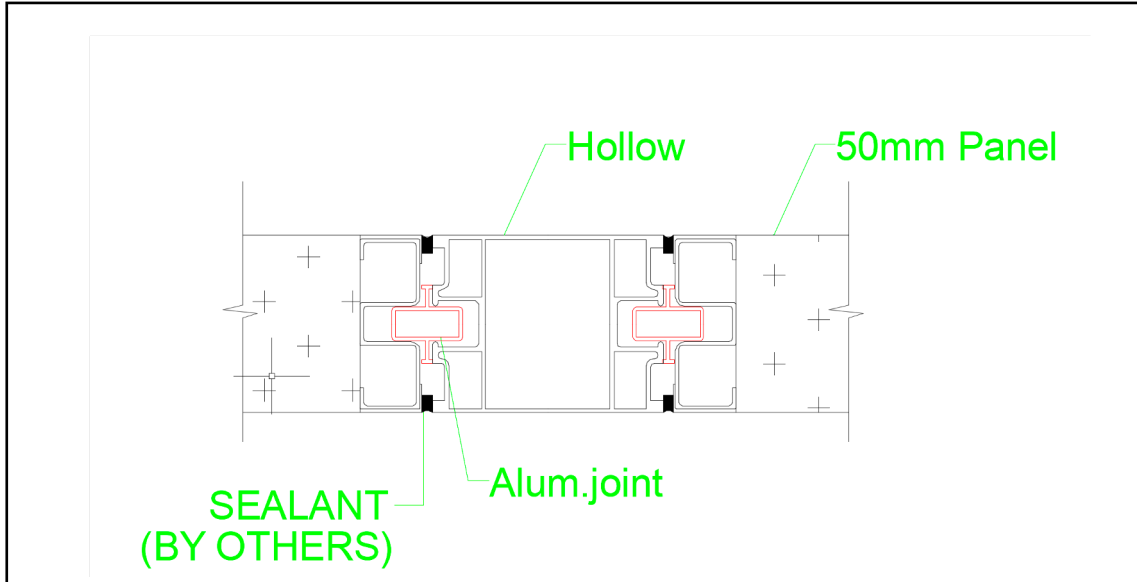


Figure 3: GMP2000S System Double Glaze & Panel Joint

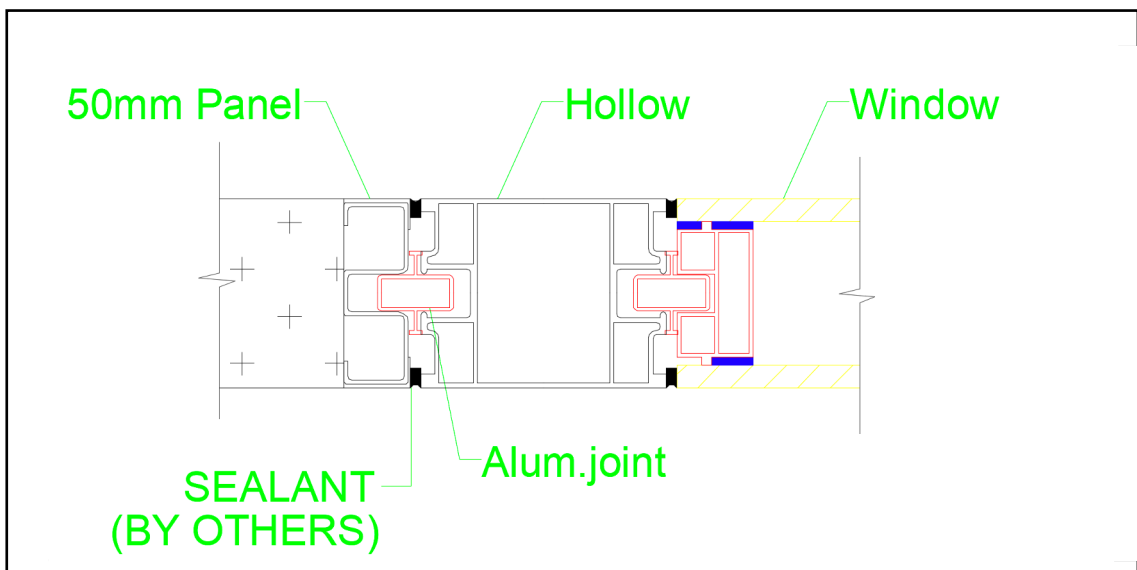


Figure 4: GMP2000S System Ceiling & Panel Point

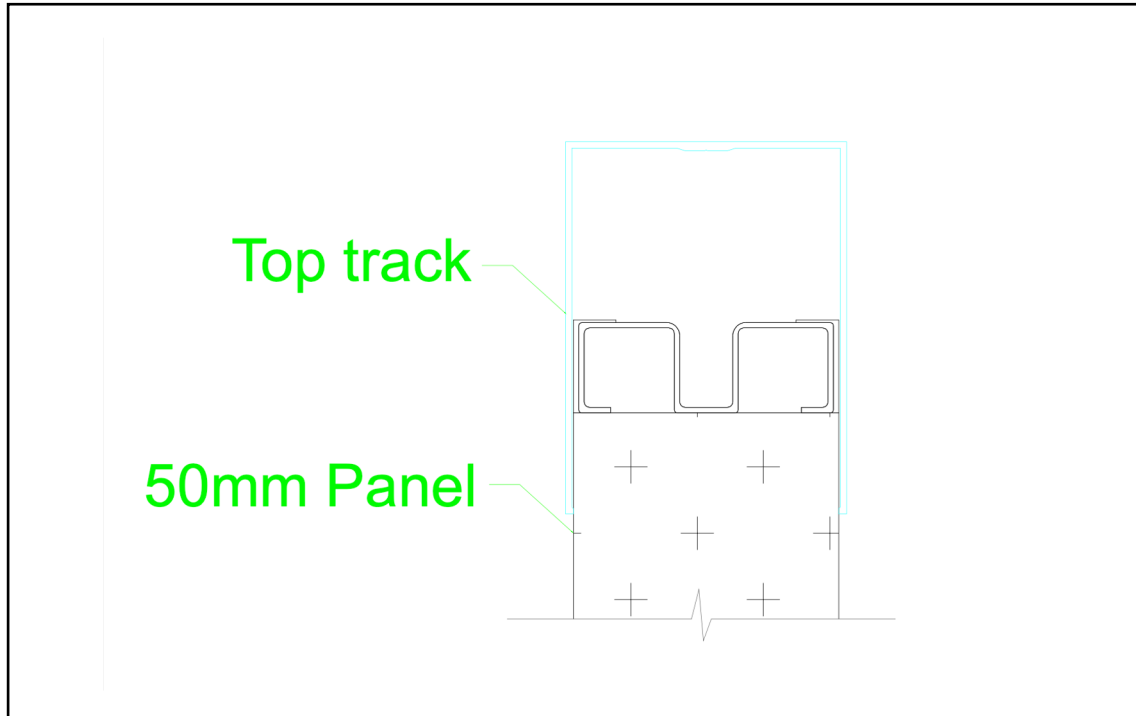


Figure 5: GMP2000S System Adjustable Floor Track on Floor Sitting

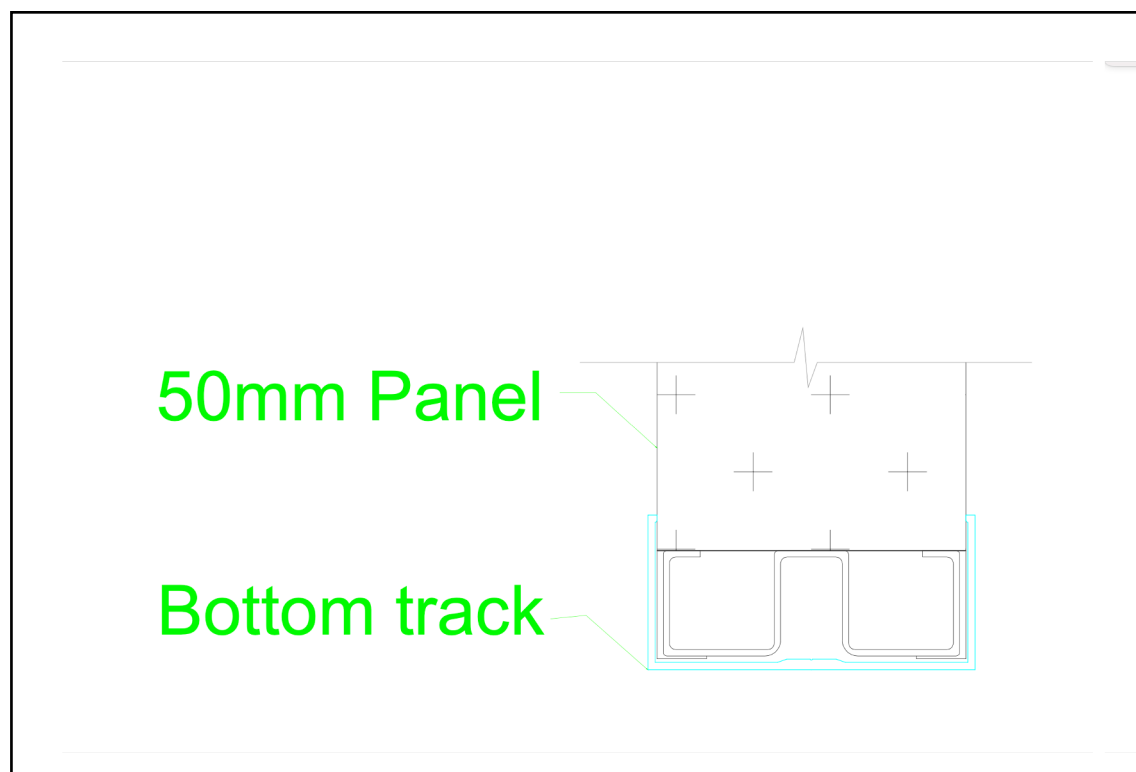


Figure 6: GMP2000S System Wall Corner Joint

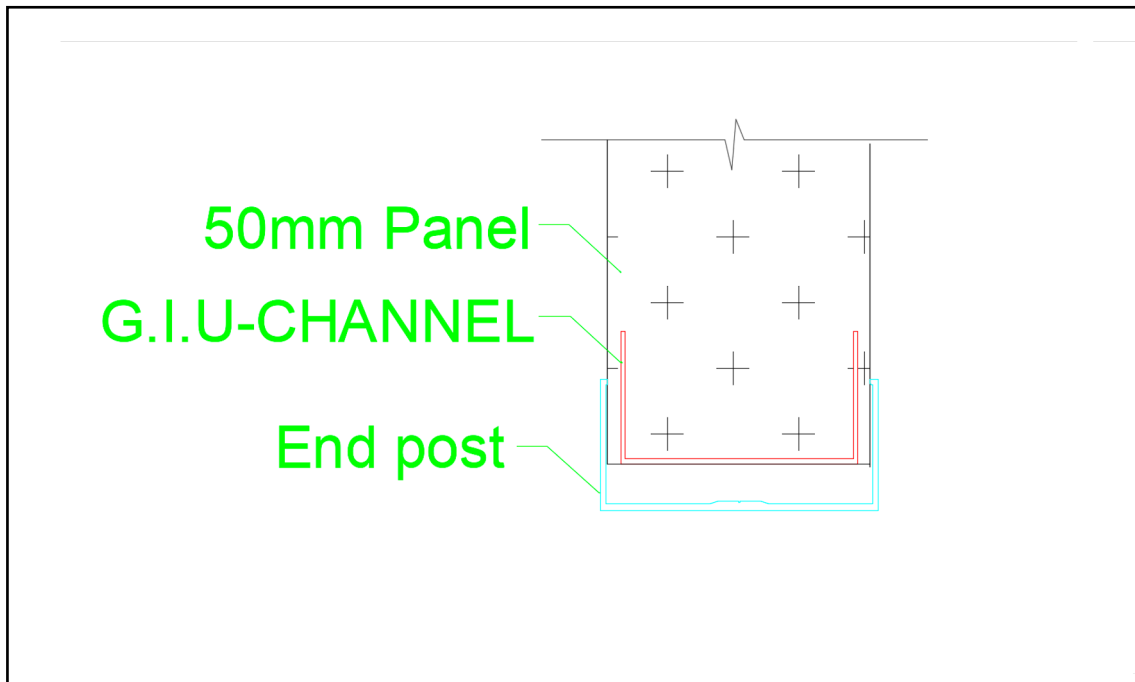


Figure 7: GMP2000S System Wall Corner with Rounded Joint

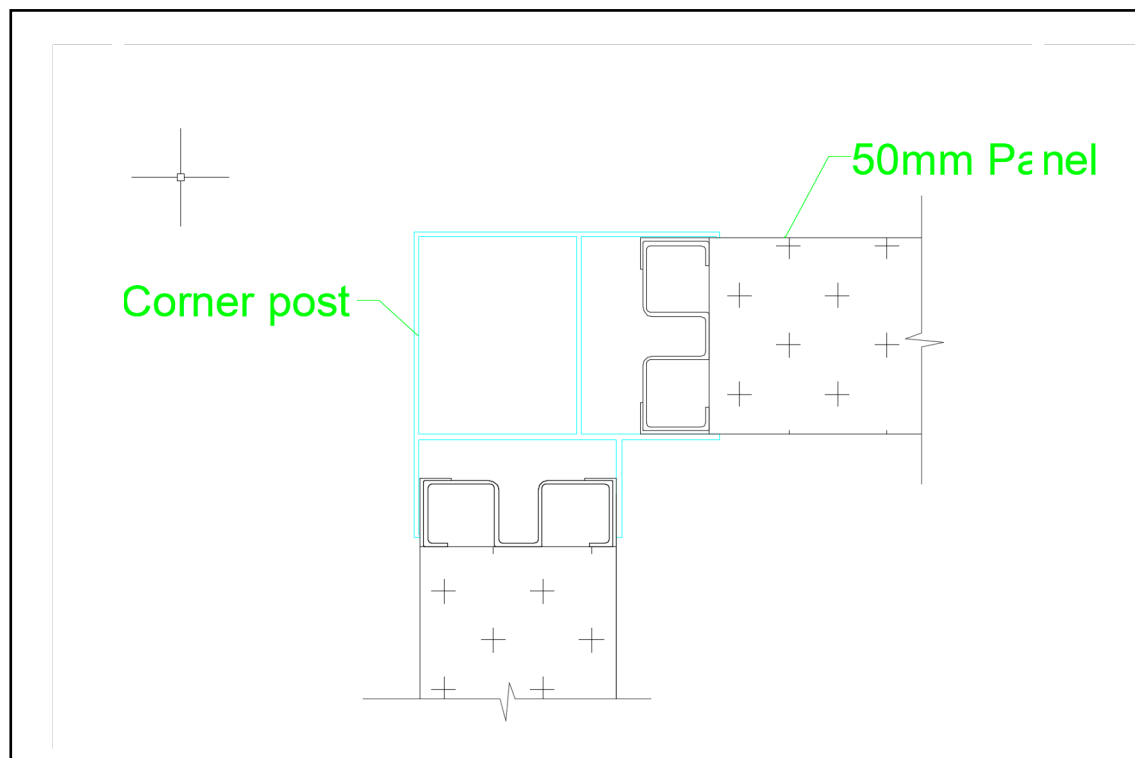


Figure 8: GMP50 System Simulation Appearance (External)

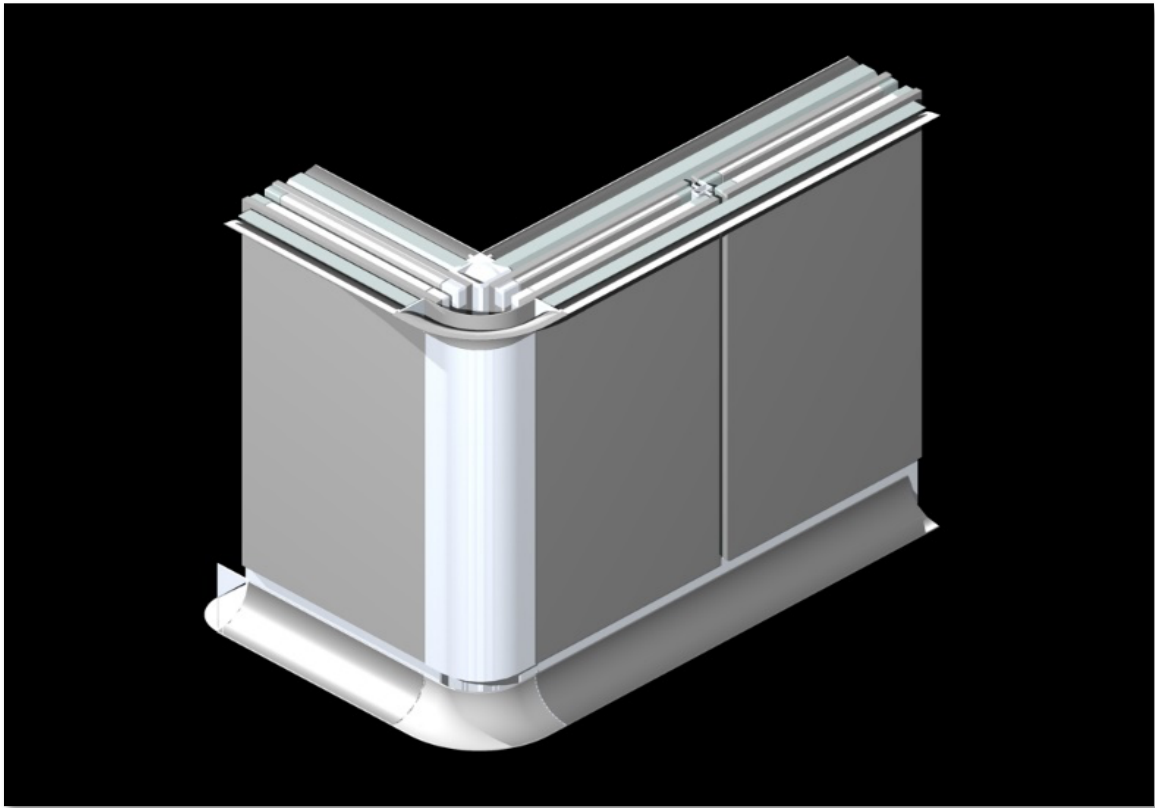


Figure 9: GMP50 System Simulation Appearance (Internal)

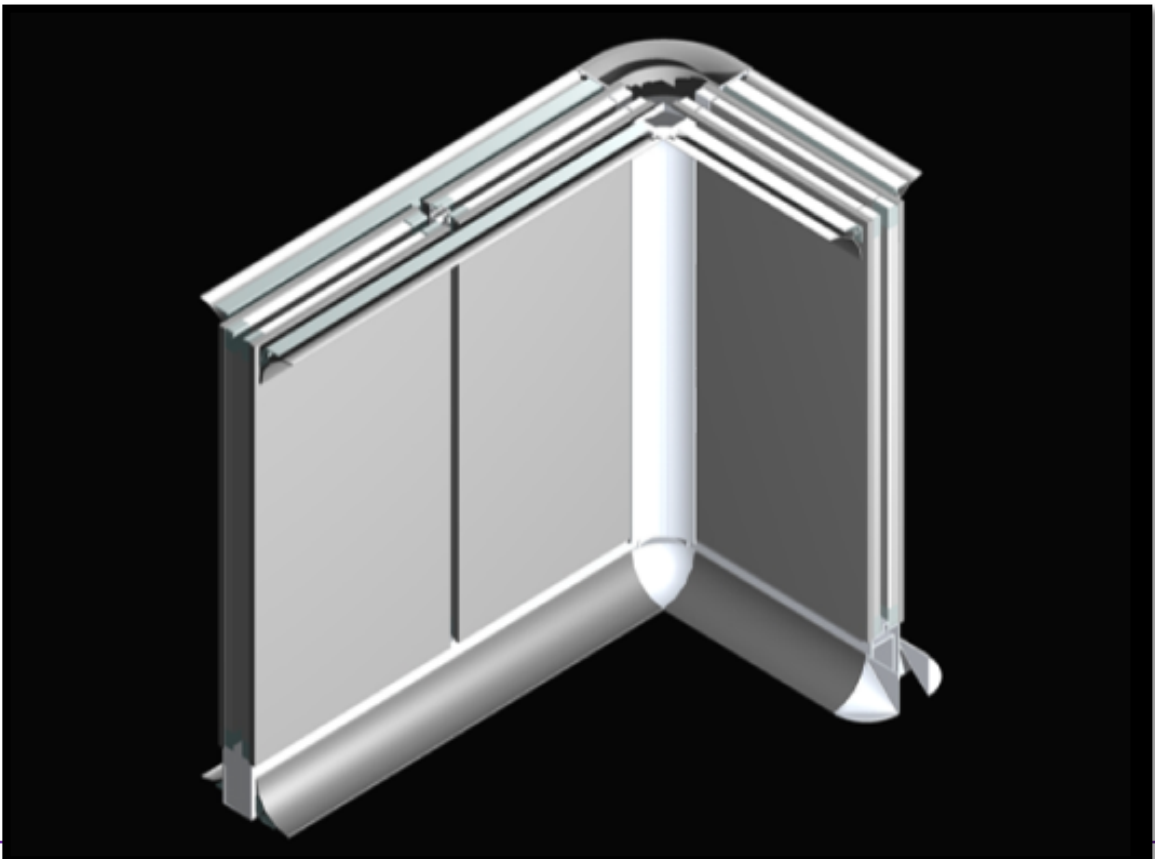


Figure 10: GMP50 System Parts Combination (External View)

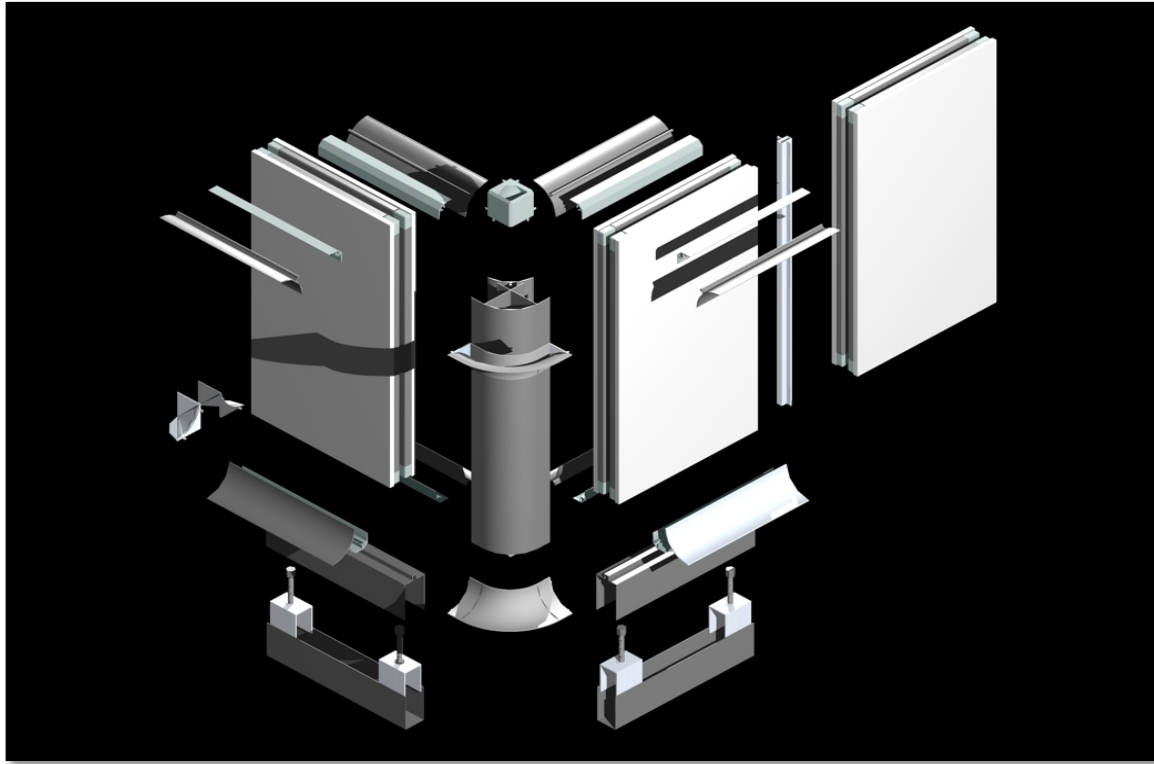


Figure 11: GMP50 System Parts Combination (Internal View)



Figure 12: GMP50 System Finishing After Completed



Figure 13: GMP50 Systems Typical Appearance



Figure 14: GMP50 Systems Setup

