



## **SFS3000 STUD WALL PANEL SYSTEM**

### **INTRODUCTION:**

**SFS3000 Stud System is designed to meet your most demanding criteria as:**

1. Cost effective & value engineering
  - Flexible and easy installation system which is, the aluminium stud frame can be pre-installed even without installing the panel, fast installation and suitable for light completion schedule.
  - Optimum cost control design.
  - The flexibility designed into the basic column-locking bar type function permits tailor-made solutions to suit the most varied technical requirements.
2. Superior appearance
  - Smooth color roll coated aluminium skin surface gives a perfect appearance.
3. Demountable and easy to remodel
  - Columns and locking bars can both be moved horizontally and vertically.
  - Wall height can be easily changed, doors of any type and size can be easily inserted wherever needed.
  - Single-side wall sections can be converted into double-sided sections without a problem. Panels and glazing can be replaced at any time.
  - Panels can be un-installed and relocated, it is also easy to modify on site.
  - High intensity aluminium honeycomb panel, easy for handling during remodel process.
  - Reusable system with flexible custom to size.
4. Fast delivery and competitive cost
  - SYC provides fast delivery to meet the customer's schedule.
  - SYS provides high quality product at a reasonable price to meet customer's requirement.



5. Suitable for cleanroom of up to Class 1
- SFS3000 stud wall panel systems are specially designed for high end cleanroom up to Class 1

**System:** Demountable wall panel system

**Panel Type:** **45 mm thick (Double Sided Wall)**

Panel surrounding are open edges; optional with T=0.6mm GI coated steel close edge

Combustion property, non-combustible material, according to standard GB5464

**1mm thick (Single Sided Wall)**

1mm GI Sheet 4 bending with coating.

**Applications:** Electronics & Pharmaceutical Cleanroom

**Facings:** 0.6mm PE Roll Coated steel skin, with or without Static Dissipative Surface Treatment

Conductivity:  $R=10^6\Omega-10^9\Omega$

The surfaces are protected with a film foil (0.05mm) for the prevention of scratches during transport and installation damages.

**Color:** Grey White (Close to RAL 9016)

**Core:** Aluminium Honeycomb, T=0.06 mm,  $\varnothing=17$  mm

**Adhesive:** Rebon YB2002 (resin) mixed with YB8001 (Hardener) Epoxy Paste Adhesive

Mixing Ratio, YB2002:YB8001=2:1

**Panel Dimension:** Thickness of the panel is 45 mm (For Double Sided Wall).  
Thickness of the panel is 1mm (For Single Sided Wall)

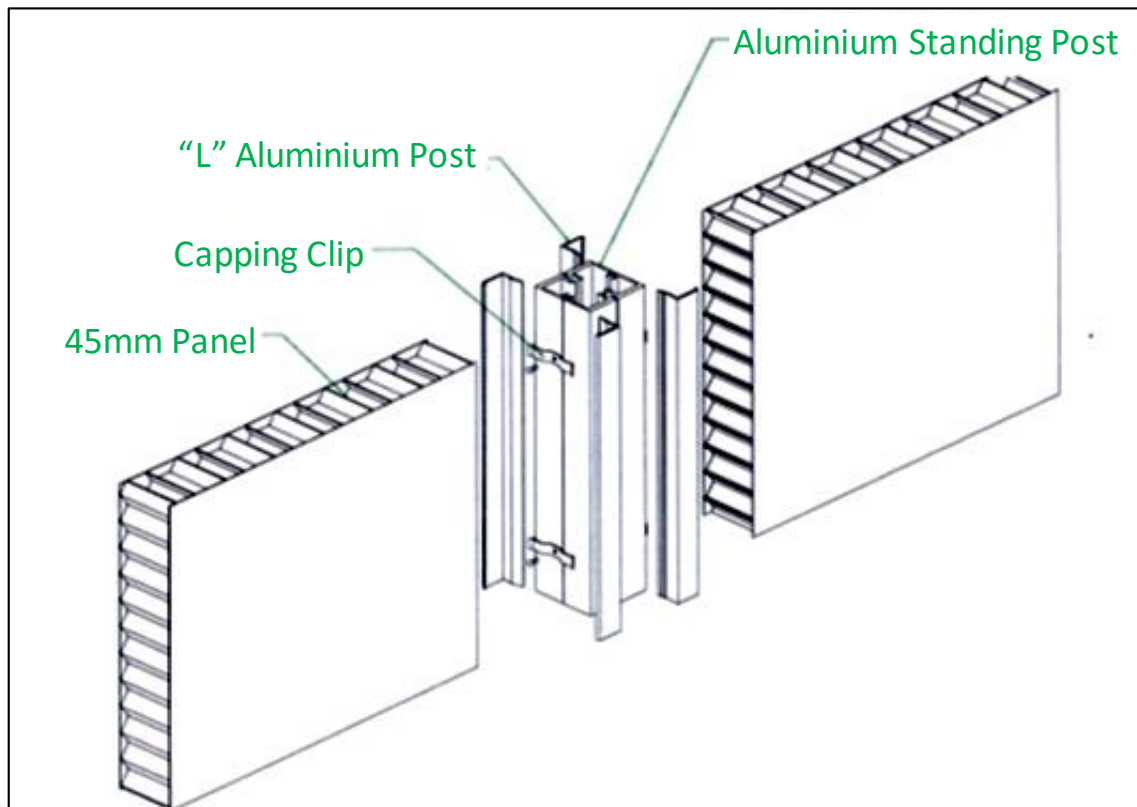
**Table 1: Honeycomb Aluminium Panel Specification**

Description	Honeycomb Aluminium Panel
Non-Combustible	Class B1
Thermal Conductivity	<0.044 W/mk
Resists Temperatures	>100°C
Water Absorption	Moderate
Compression Resistance	>100kPa
Aluminium Core Thickness	0.06mm
Aluminium Honeycomb Diameter	D=17mm
Compressive Strength	>200 kPa
Flammable Gas Toxicity	Less

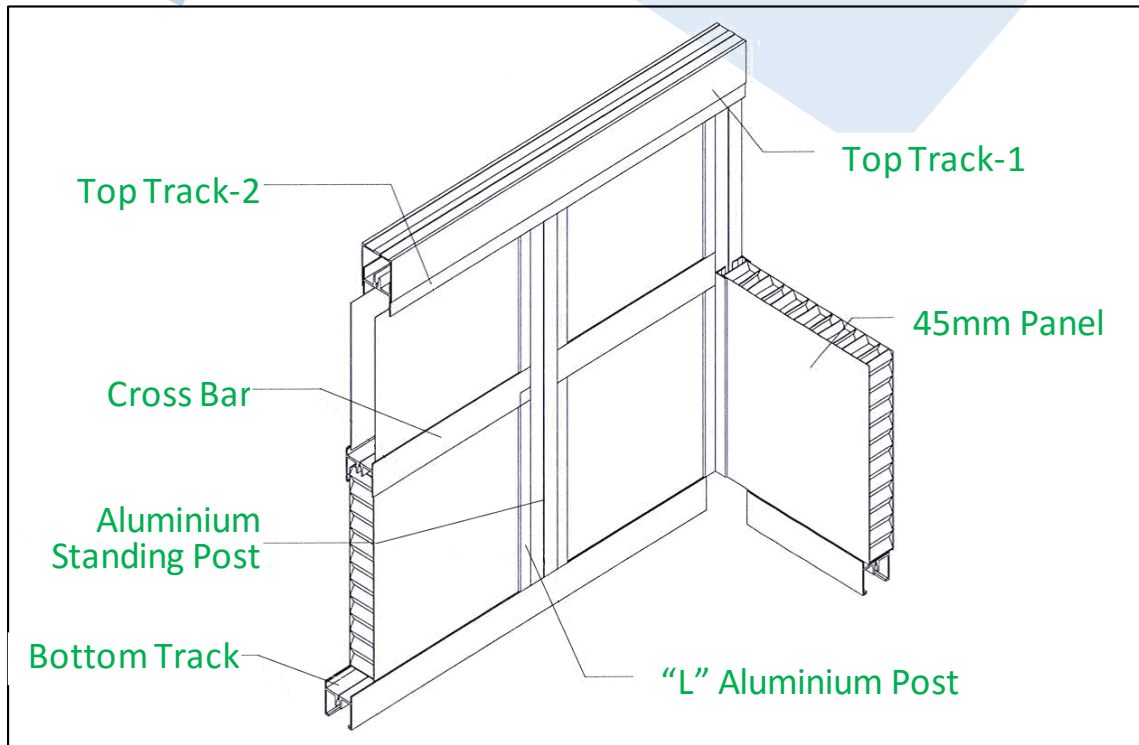
**Fire Safety Performance:** British Standard 476: Part 7: 1997  
 British Standard 476: Part 6: 1989 + A1:2009  
 (Tested on Core Materials)  
 (Rating: Class 0)

The vertical joint between panels will be sealed with SYC specially designed aluminium accessories (Refer to detail drawing).

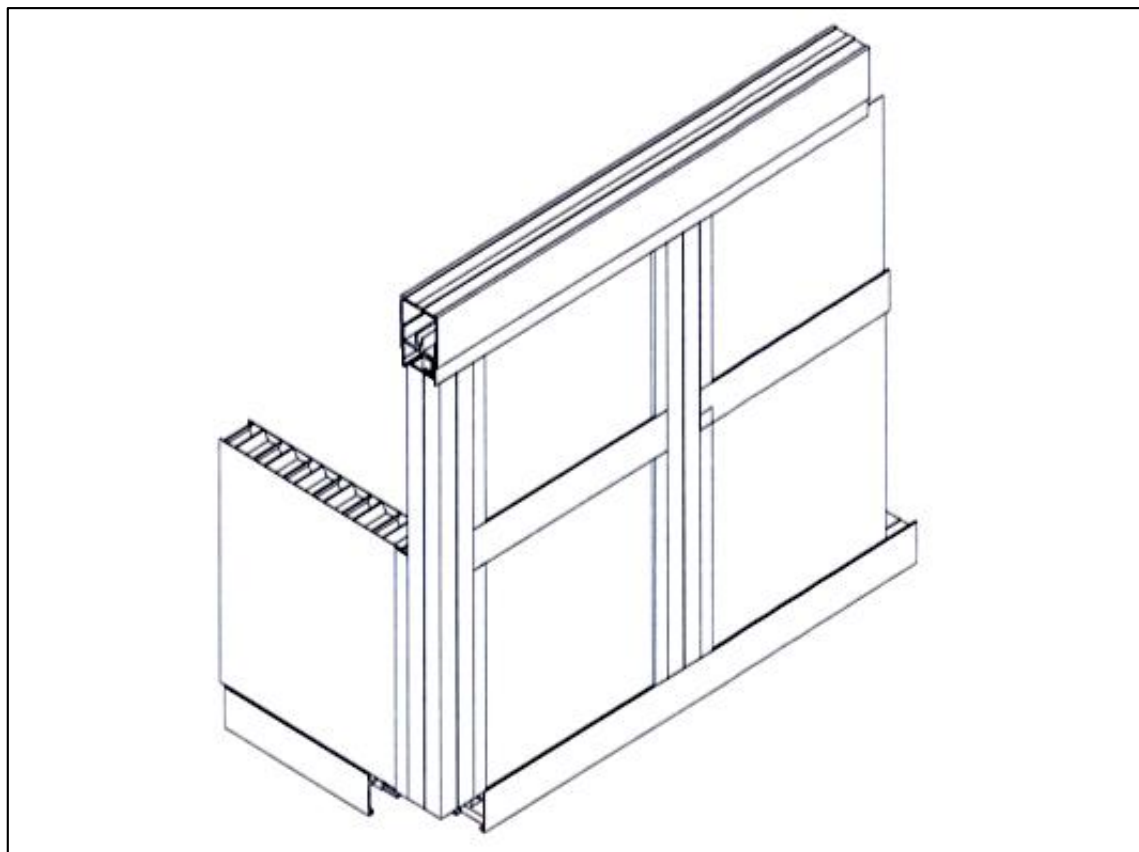
**Figure 1: System Detail Drawing-Double Sided Wall**



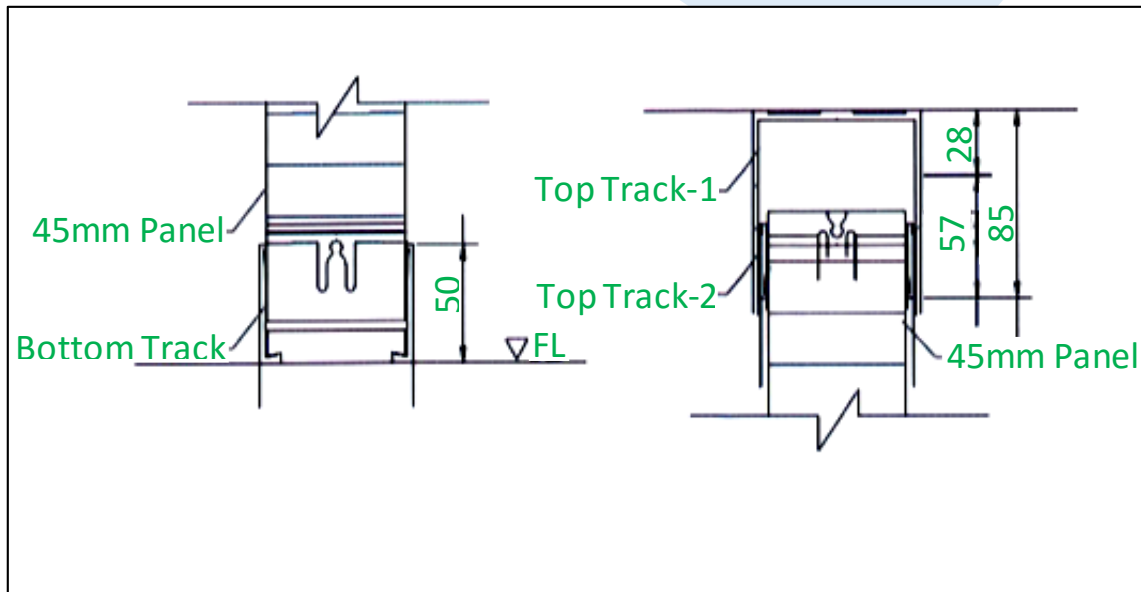
**Figure 2: System Drawing (Internal)-Double Sided Wall**



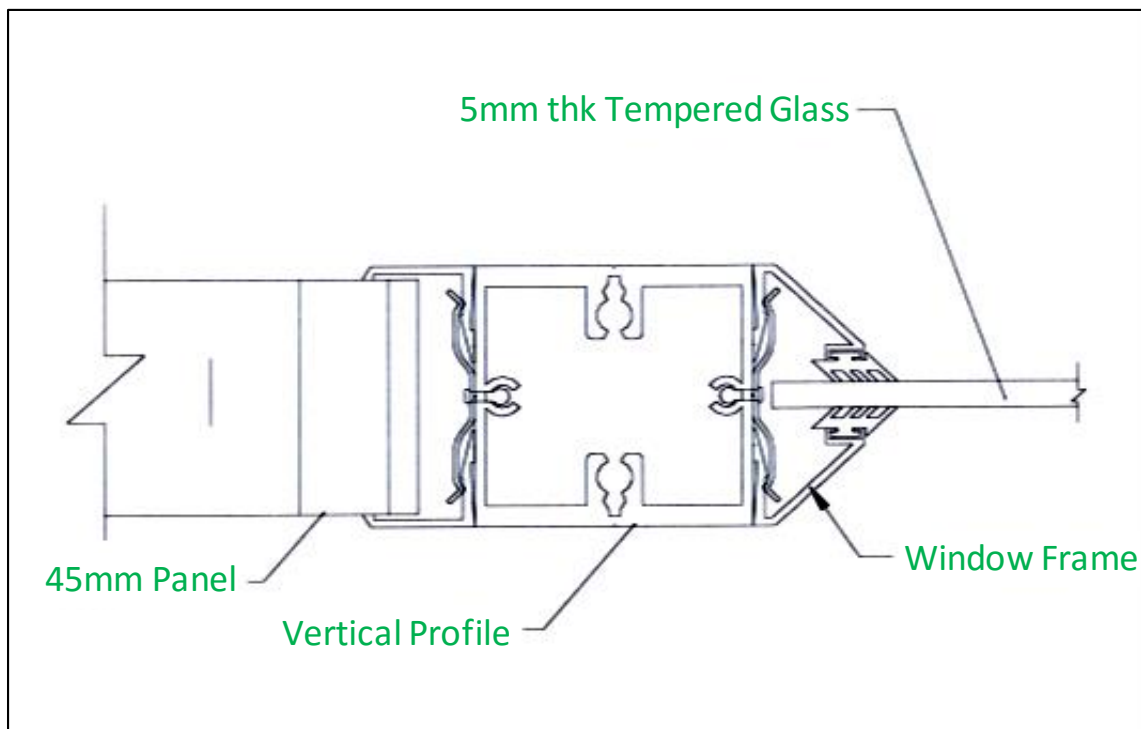
**Figure 3: System Drawing (External)-Double Sided Wall**



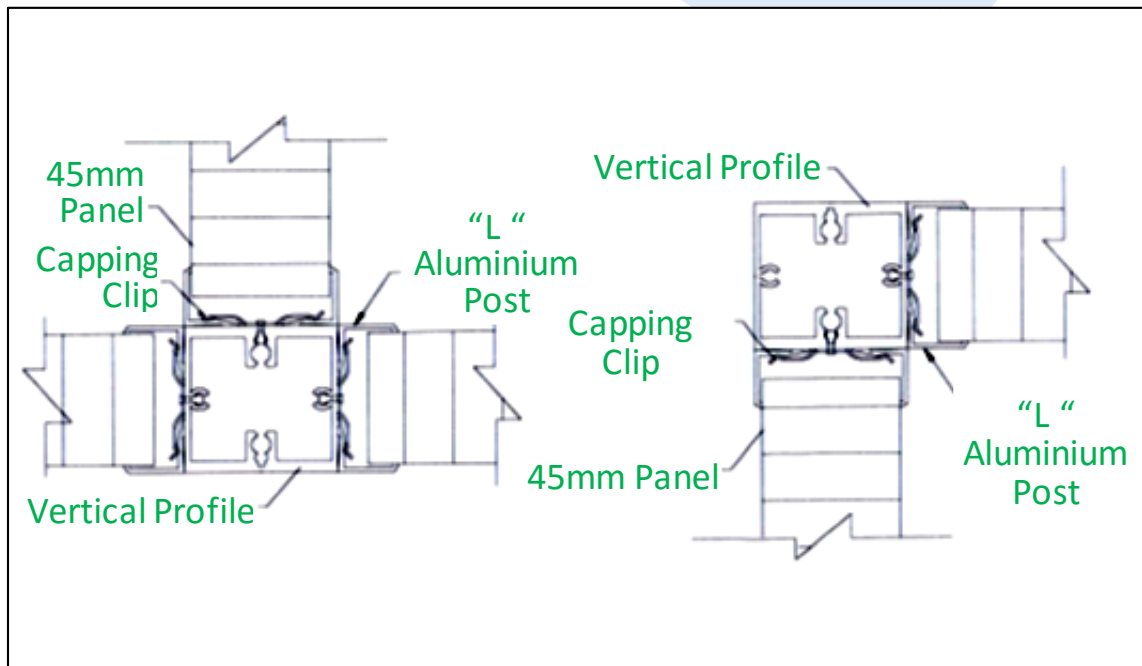
**Figure 4: Panel Top and Bottom Track Joint-Double Sided Wall**



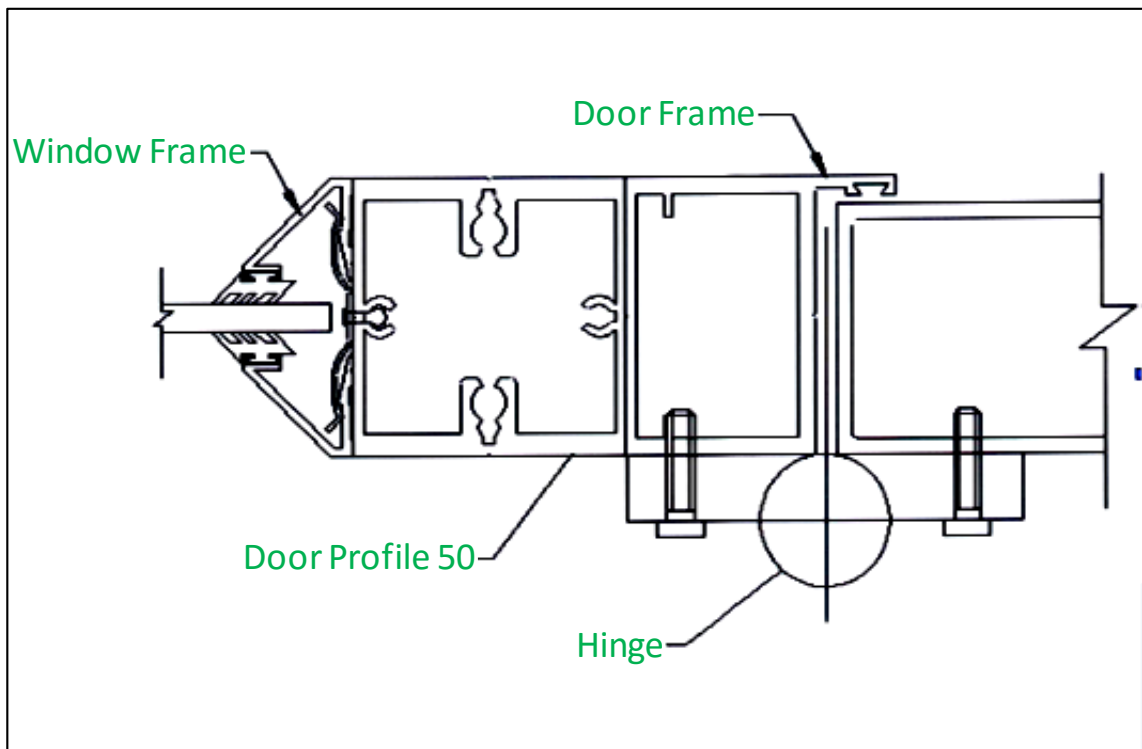
**Figure 5: Window & Panel Joint-Double Sided Wall**



**Figure 6: Corner and End Post Joint-Double Sided Wall**

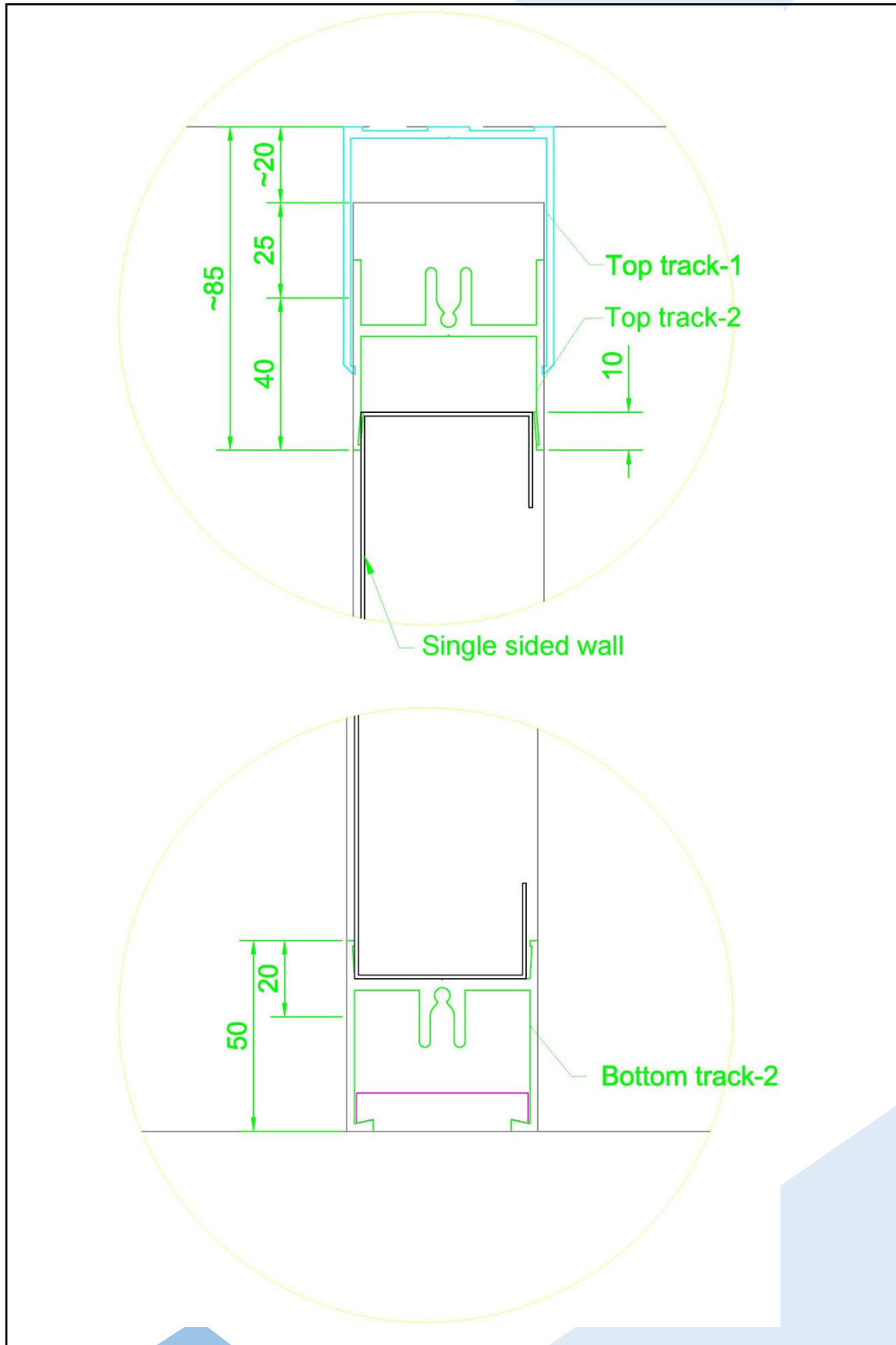


**Figure 7: Door Frame & Window Frame -Double Sided Wall**

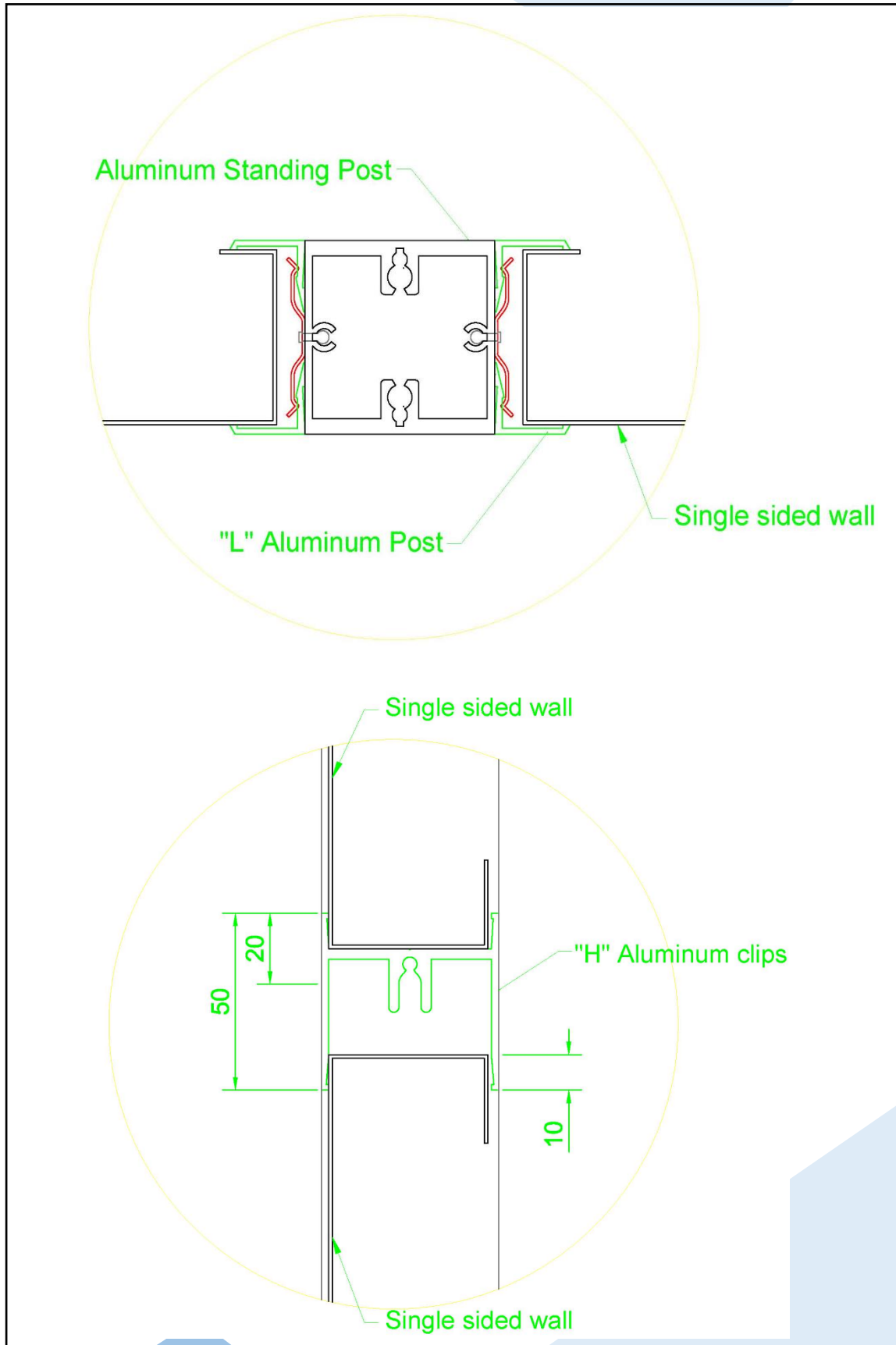




**Figure 8: Top Track & Bottom Track-Single Sided Wall**



**Figure 9: Panel Joints-Single Sided Wall**





**Figure 10: SFS3000 System Appearance-Double Sided Wall**



**Figure 11: SFS3000 System Appearance-Double Sided Wall**

